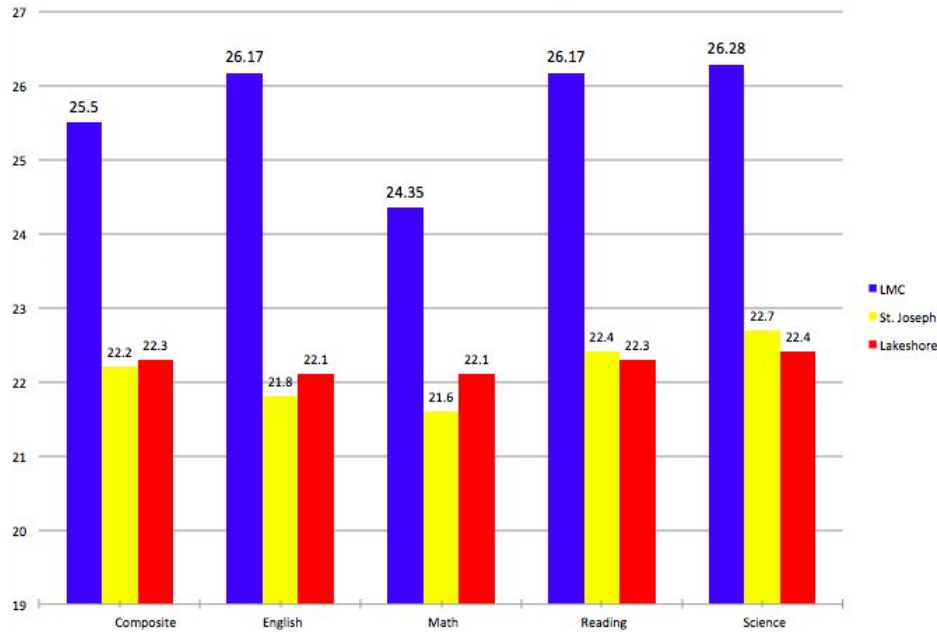


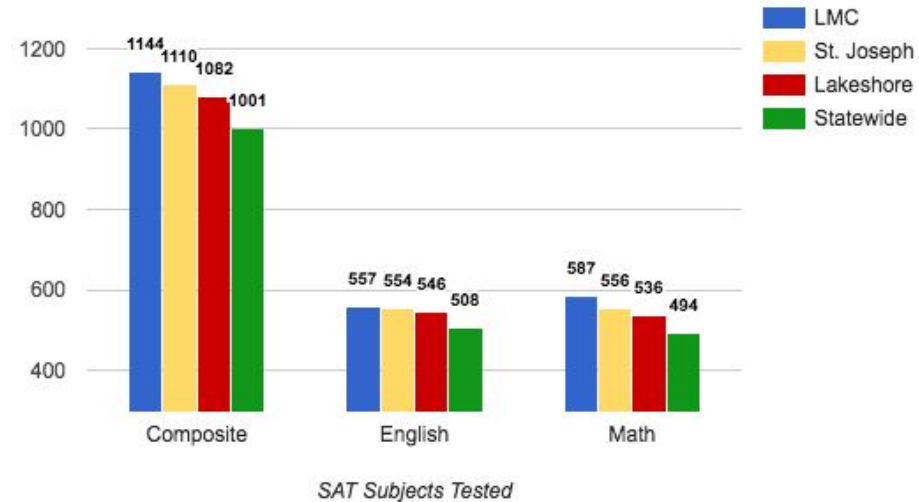
# PERFORMANCE INDICATORS

## Top Scores in 3 Counties

Class of 2016 ACT Comparison



Class of 2017 SAT Comparison



**SAT SCORES ARE HIGHEST IN THE REGION and TOP 30 COMPARED TO MICHIGAN PUBLIC SCHOOLS**



**LAKE MICHIGAN**  
CATHOLIC SCHOOLS

# READINESS for HIGH SCHOOL & COLLEGE

Students will progress through Middle School and on to the rigors of High School, and their courses become more difficult. Selective colleges and universities look at the level of difficulty of a student's schedule as an indicator in their admissions process. The foundation begins in Middle School in preparing students for the A.P. and College courses that are offered at LMC. LMC is proud of the many graduates who are offered opportunities at some of the country's best institutions as a result of the LMC course offerings, standardized scores, and coursework expectations.

Traditionally, the ACT and SAT has defined benchmark college readiness scores for college courses. These scores serve as an indicator for success for individual students in corresponding credit bearing college courses.

## ACT Benchmark Scores & LMC Students Scores

	ACT College Benchmark	LMC Class of 2015	LMC Class of 2016
English	18	25.1	26.17
Math	22	23.9	24.35
Reading	22	24.7	26.17
Science	23	24.4	26.28
Composite		25.1	25.5

## SAT Benchmark Scores & LMC Class of 2018

	SAT College Benchmark	LMC Class of 2017	State of MI Average
English	480	557	507.5
Math	530	587	493.7
Composite	1010	1144	1001

The state of Michigan recently changed the state administered college entrance exam from ACT to SAT. Therefore, ACT scores of past LMC graduating classes are represented above. LMC students also took the ACT and these scores were compiled for the graduating class of 2018. Their composite is a 24.1.

As is tradition, this year's LMC students' SAT scores were significantly higher than statewide averages as well as the SAT benchmark scores. LMC ranked at the top in our three county region in every category.

